

Rev. # 6-03

PART # HS2601-5,HS2602-5,HS2603-5 2001-2010 CHEVY HD REAR HANGERS & SHACKLES INSTALLATION INSTRUCTIONS

Please take the time to read these INSTALLATION INSTRUCTIONS and check the Hardware Parts List to be sure you have all the listed parts.

DJM parts should be installed by qualified mechanics. If you are not familiar with automotive repair have the parts installed by someone with experience.

There are 3 different factory hanger. Compare hangers before beginning installation.

Please read the warranty information (blue page enclosed). Complete your Product Warranty Card and mail it to DJM Suspension.

Please take a few minutes to fill out your installation helper (back side of warranty). Accurate measurements BEFORE BEGINNING INSTALLATION will show any irregularities in your vehicle.

**NEVER WORK UNDER TRUCK SUPPORTED BY A JACK ONLY !!!
USE QUALITY JACK STANDS WHICH HAVE A RATING ADEQUATE FOR YOUR TRUCKS WEIGHT!!!**

New shocks #2200C driver and #2400C passenger side are required.

Hardware Parts List:

Hardware Included in HS2601-5, HS2602-5 & HS2603-5

- 2- Spring Eye Hangers.
- 2- Shackles w/ bushings.(2601)
- 2- 5/8" x 4-1/4" Leaf Spring Bolt.
- 2- 5/8" Star Washers.
- 2- Bump Stop Brackets.
- 2- Bump Stops.
- 2- 3/8" x 1" Counter Sink Bolt.
- 2- 3/8" x 1" Hex Bolt.
- 6- 3/8" Nylock Nuts.
- 2- 3/8" x 24 x 5" Center Bolts
- 2- 3/8" x 24 Nuts

Hanger Mounting Bolts

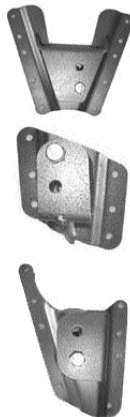
- Included in HS2601-5
- 20- 7/16" x 14 Nylock Nuts.
- 20- 7/16" x 14 x 1-1/4" Bolts.
- 20- 7/16" Flat Washers.

Hanger Mounting Bolts

- Included in HS2602-5
- 12- 7/16" x 14 Nylock Nuts.
- 12- 7/16" x 14 x 1-1/4" Bolts.
- 12- 7/16" Flat Washers.

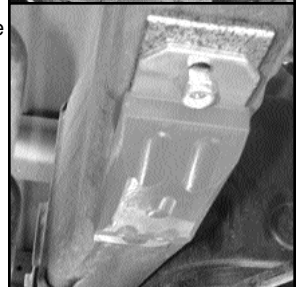
Hanger Mounting Bolts

- Included in HS2603-5
- 16- 7/16" x 14 Nylock Nuts.
- 16- 7/16" x 14 x 1-1/4" Bolts.
- 16- 7/16" Flat Washers.



Remove the upper overload springs from the leaf spring pack. A new center bolt is included to bolt the springs together. Remove the striker pads attached to the frame.

Remove the rivets holding spring hanger to the frame. This can be done with a air chisel or drill out rivets. Mount your new DJM Spring hanger in original holes on the frame with hardware provided, torque bolts to 55-60 ft/lb. Gas tank will need to be moved to gain access to bolts on driver side. Photo shown using HS2601-5, **Note:left and right side brackets have holes offset rearward 2500\3500 8" Bed.** Once you have both brackets installed, raise the axle so the front of the springs can be located in new hanger. With new bolts supplied, attach spring to hanger using star washers on the outside of the brackets and tighten. (You may find it easier to attach the spring to the hanger before bolting the hanger to the frame.)



Apply some grease to the bushings and inside sleeves then attach new shackle on the frame mount and bolt in place with factory bolts. Shackle will install with bushings down and open side forward. The hole farthest away from bushing will lower truck more than the closer hole. Now raise the rear axle high enough to align the spring eye and shackle. Insert the remaining bolt and install nuts.

Remove stock rear bump stop. Find the 3/8 countersunk bolt, use this bolt in the counter sunk hole in the bracket and install through the factory hole with nuts supplied. Install the urethane bump stop to the stud in the bracket and use the 3/8" bolts and nuts provided for the other end. Install new rear shocks.

NOTICE TO END USER : This kit requires the removal of the upper overload springs. This will reduce the towing capacity of the vehicle. We recommend that you read through the instructions, contact DJM's tech line and ask your installer about your needs and compatibility with this kit. Caution : Leaf springs are under considerable tension. Good judgment should be used when removing spring bolts. The rear spring may move causing a pinch point between the spring and rear shackle. Installing spring hangers require the removal of the factory hanger (located on the front of the rear spring). They are riveted to the frame and the rivets must be removed. This can be difficult and time consuming without the proper tools and experience. DJM recommends professional installation.

Install rear wheels and torque lug nuts. Remove jack stand and floor jack. Check the height of the rear. You can change the height by moving the spring to the other hole in shackle or hanger. **When satisfied with the height, torque all bolts to factory specs.** Take truck for test drive. Check all bolts for correct torque.

Some vehicles may require raising the carrier bearing use part #CB99 carrier bearing bracket kit, sold separately. Pinion shims may be required depending on height adjustment. Pinion shims are sold separately.

Check all bolts after 100 miles. It is recommended to check the bolts for torque every few months.