

Part # RK3209-4 2010-14 F150 INSTALLTION INSTRUCTIONS



NOTE: PLEASE, INSURE ALL HARDWARE IS INCLUDED BEFORE INSTALLATION!!

Hardware Parts List

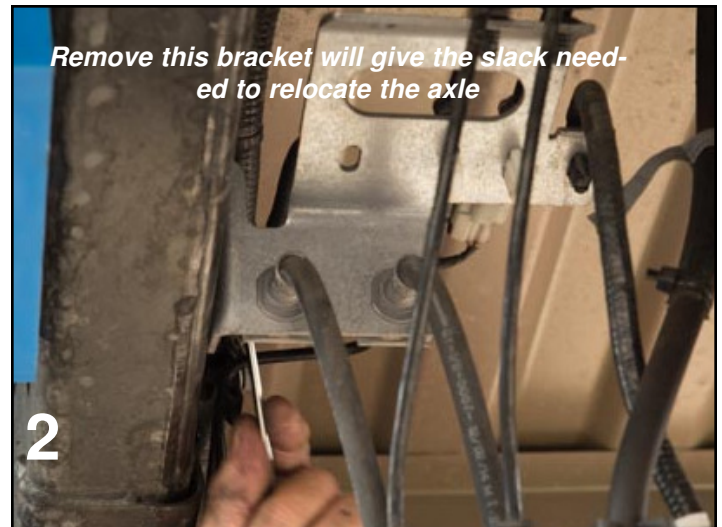
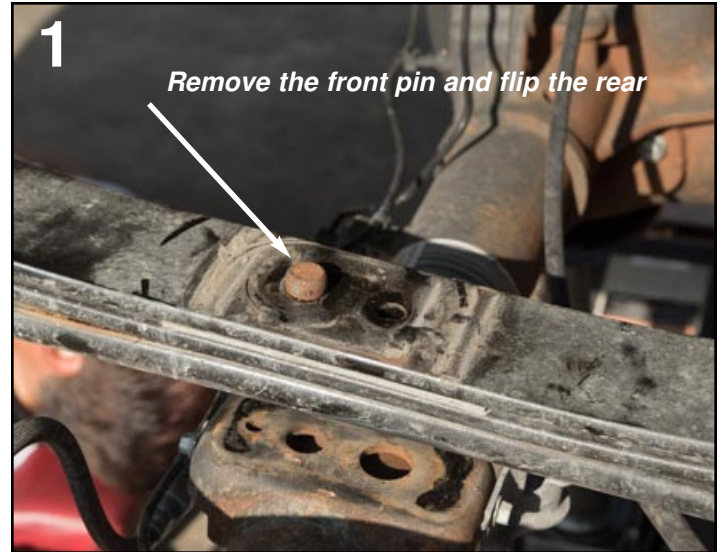
- 2x Lower Axle Brackets (3204)
- 2x Upper Axle Brackets (3204)
- 4x 5/8 U-bolts w/ nuts and washers (1025)
- 8x 5/8 Flat washers
- 8x 5/8 Nylock nuts
- 2x Spring Plates (3209)
- 2x 5/8 X 3 1/2" tap bolts
- 2x 5/8 X 4" tap bolts
- 2x Bump Stops (10s)
- 2x 5/8 X 5 shackle bolts
- 4x Zip Ties
- 2x 2200 Shock Absorbers (Optional)

1) Before beginning, measure from the center of the wheel to the top of the fender. Record measurements on the installation sheet (Included). Note: Removal of the drivers side leaf springs and gas tank not necessary.

2) Remove the U-bolts, top bracket, and spring plates. Always have the rear end supported with a floor jack! Now, remove the passenger side leaf spring. Next, remove the forward center pin and flip the rear pin. (See Figure 1)

3) Now, prepare for the drivers side leaf spring. This can be done without removing the front leaf bolt. First, remove the front leaf nut, then remove the rear shackle bolt. Now, with a little maneuvering, you should be able to remove the rear shackle.

4) Next, remove the brake line bracket and rear parking brake cable. (See Figure 2) This is to give you enough slack to maneuver the axle to clear the break and get it on top of the leaf spring. (See Figure 3)



5) Now, that the axle is on top of the spring install the passenger side leaf.

6) Lift the axle enough to install the flip bracket. (Remember the front center bolts have been removed and the rear reversed) Align the axle perch with the flip bracket. Install the new U-bolts and spring plates. Do not tighten.

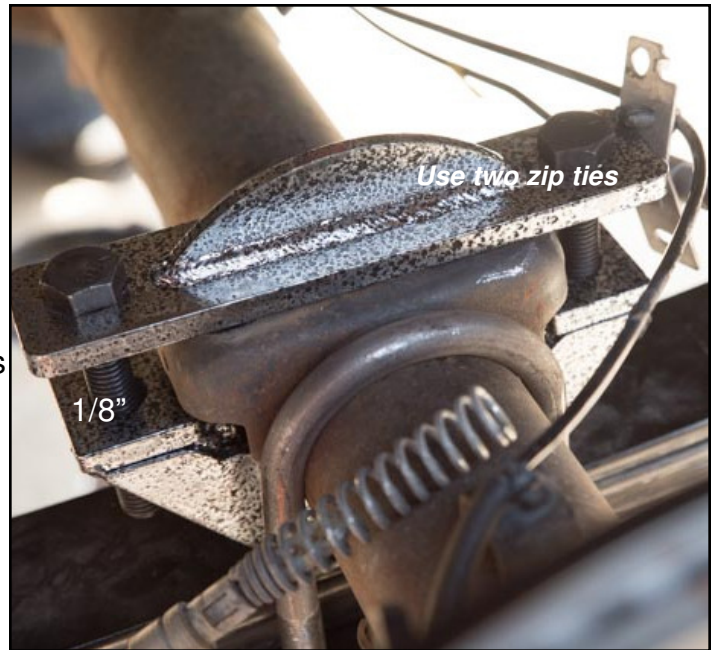
7) Rotate the axle downward until the top bracket is within 1/8 inch of the lower bracket. The top plate should be at a slight angle, with the high end towards the tail gate. Snug up the U-bolts (keeping them even). Make sure to start the nuts by hand to insure they are not cross threaded!!

8) Install the top bracket, with the longest bolt in the rear and shorter bolt in the front. Do not over tighten!! Make sure not to bend the bracket, only use around 35 pounds pressure. Now, finish tighten the U-bolts.

9) Make sure the brake line bracket is reinstalled. Route the E-brake line to the outside of the leaf spring and reattach it. Install rear shocks DJM part# 2200

10) Chase the thread, use the 3/8 -18 tap. The new bump stop screws right in. (See Figure 6 & 7)

Note: If you run into any difficulties, please contact us!! Give us a call at (310) 538-1583 or email us at tech@djmsuspension.com



2009-2014 F150 Lift Hanger Installation Instructions

Hardware Parts List

- 1) Left two piece hanger
- 1) Right two piece Hanger
- 3) 7/16"-14 X 5" bolts
- 4) 7/16"-14 Nylock nuts
- 6) 7/16" Washers
- 3) 18mm X140mm bolts
- 3) 18mm Nylock nuts
- 4) 1/2"-13 X1/4" bolts
- 8) 1/2" washers
- 4) 1/2" nylock nuts
- 2) 7/16" Nylock

THE GAS TANK

The gas tank makes this kit a bit more challenging to install and there is two different methods that are used to deal with the tank. #1 is to have very good and well thought out supports for the tank and unbolts the straps so the tank can be moved out enough to install the bolt. #2 is not to remove the tank and cut the spring bolt (drivers side) and replace it with new 18mm bolts (Supplied). We use method #1

The second challenge is to install the 7/16" bolt though the forward bracket we like the bolt head inward because of the gas tank clearance. Method #1

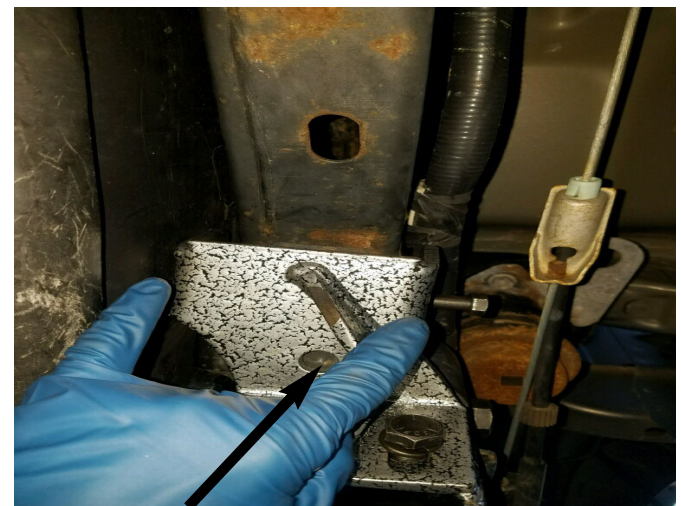
Now that you have both bracket in place and leaving the bolts loose bolt both brackets together using 1/2" X1 1/4" Bolts.

At this point you need to line drill a 7/16" hole in the bottom of the forward bracket. The hole is in the bracket near the gusset. Drill though the truck and install the 7/16 X1 3/4" bolt. This is the key to the strenth of the assembly.

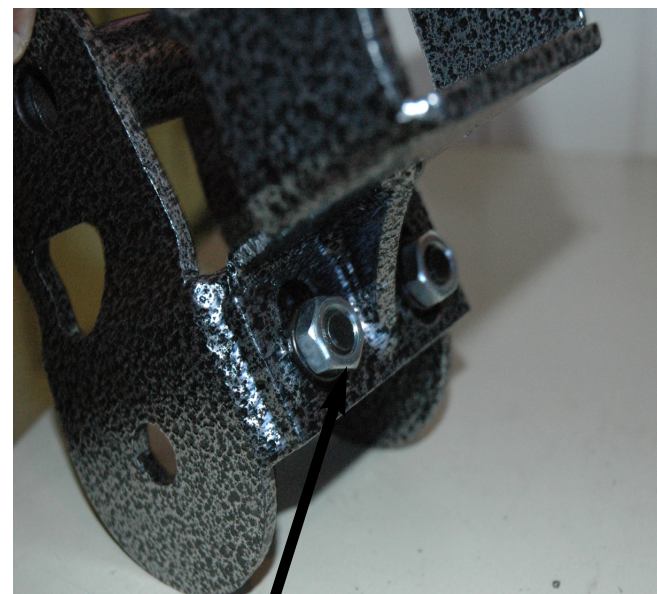
Now tighten all the bolts.**Note:** The spring bolt and shackle should not be tightened until the truck is on the ground.



Method #1 head of bolt inside



Line drill 7/16 and bolt in place with supplied hardware



Leave the two buckets loose and bolt the two together using 1/2 X 1/4 bolts and nuts supplied.