

Rev. # 02-02

## PART # FK3000-5 & FK3001-4

### 1973-1996 FORD F150 & 1983-1997 RANGER REAR FLIP KIT

# INSTALLATION INSTRUCTIONS

Please take the time to read these **INSTALLATION INSTRUCTIONS** and check the **Hardware Parts List** to be sure you have all the listed parts.

These installation instructions are prepared for the professional installer with the proper equipment, tools and experience in suspension systems and safety. This vehicle and its components are extremely heavy and can be dangerous without the proper equipment and experience.

Please read the warranty information (blue page enclosed). Complete your Product Warranty Card and mail it to DJM Suspension.

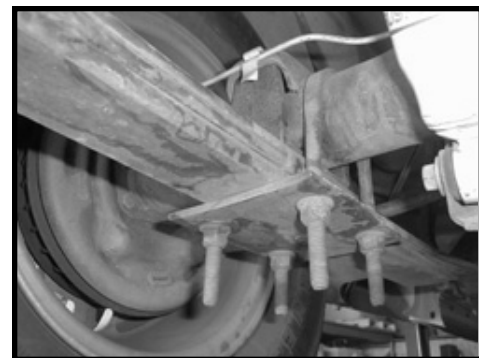
Please take a few minutes to fill out your installation helper (back side of warranty). Accurate measurements **BEFORE BEGINNING INSTALLATION** will show any irregularities in your vehicle.

**NEVER WORK UNDER TRUCK SUPPORTED BY A JACK ONLY !!!**  
**USE QUALITY JACK STANDS WHICH HAVE A RATING ADEQUATE FOR YOUR TRUCKS WEIGHT!!!**

New shocks are required.  
Use DJM Part #TS1900(2 required).

#### Hardware Parts List:

Axle Flip Kit  
2- Axle Locators



Picture shown with DJM spring plate.

Remove factory bump stop bracket and install bump stop to frame.



Install new rear shocks.

Test drive vehicle.

Measure the amount of drop and record on the installation helper.

#### RELOCATING (FLIPPING) REAR AXLE

Reverse the leaf spring center bolt so the nut is on the bottom.

Place the new axle locator bracket on top of the spring, with the off center hole toward front of vehicle. This will center the rear axle and pull the drive shaft back from the transmission slightly.

Lower rear axle so the new axle supports fits up inside the existing rear axle pad welded to axle. Mark and drill a hole in the factory spring plate for the spring center pin. This hole is offset just like the flip bracket. Install factory U-bolts and factory spring plate on the bottom of the springs. Tighten U-bolts.

Ranger extended cabs and splash will sit low in the rear.  
Add DJM #SH3001-2 lifting shackle to raise the rear.

Note : Ranger Extended Cab and SPLASH models with 2 piece drive shaft may experience drive line vibrations. If vibrations occur install DJM part # CB31 carrier bearing shim kit.

Note :F150 Extended Cab models with 2 piece drive shaft may experience drive line vibrations. If vibrations occurs install DJM part # CB23 carrier bearing shim kit.

Check out all the DJM products on the web [www.DJMSuspension.com](http://www.DJMSuspension.com)

Tech Line (310) 538-1583