

Rev. # 7-07

PART # HS1135-4

1973-1998 FORD F350 REAR HANGERS & SHACKLES

INSTALLATION INSTRUCTIONS

Please take the time to read these **INSTALLATION INSTRUCTIONS** and check the **Hardware Parts List** to be sure you have all the listed parts before beginning installation.

DJM parts should be installed by qualified mechanics. If you are not familiar with automotive repair have the parts installed by someone with experience.

Please read the warranty information (blue page enclosed). Complete your Product Warranty Card and mail it to DJM Suspension.

Please take a few minutes to fill out your installation helper (back side of warranty). Accurate measurements **BEFORE BEGINNING INSTALLATION** will show any irregularities in your vehicle.

**NEVER WORK UNDER TRUCK SUPPORTED BY A JACK ONLY !!!
USE QUALITY JACK STANDS WHICH HAVE A RATING ADEQUATE
FOR YOUR TRUCKS WEIGHT!!!**

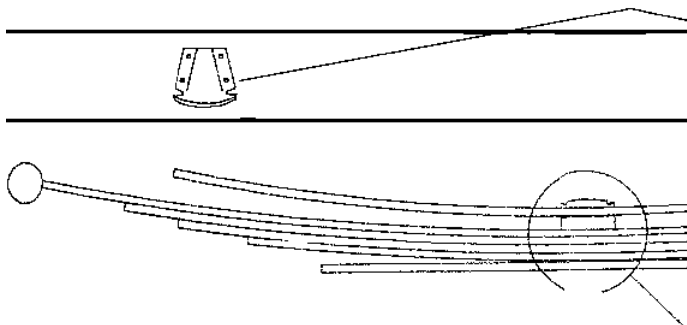
THIS KIT REQUIRES THE REMOVAL OF UPPER OVERLOAD SPRINGS AND STRIKER PADS, WHICH MAY REQUIRE ADDITIONAL LOAD CARRYING DEVICES TO RETAIN LOAD CAPACITY.

NEW REAR SHOCKS DJM PART #2000 ARE REQUIRED.

Hardware Parts List:

- | | |
|--------------------------------|--------------------------------|
| 2- Spring Eye Hangers. | 10- 7/16" x 14 x 1-1/4" Bolts. |
| 2- Shackles w/ bushings.(1015) | 10- 7/16" x 14 Nylock Nuts. |
| | 20- 7/16" Flat Washers. |

Caution : Leaf springs are under considerable tension. Good judgment should be used when removing shackle bolts. The rear spring may move causing a pinch point between the spring and rear shackle.



Working on one side at a time, remove the u-bolts holding the springs to the axle. To keep spring pack together while removing over load, use two large C-clamps, placed close to center bolt on leaf spring and tighten.

Remove center bolt nut. Slowly loosen c-clamps and remove the upper overload spring. Clamp springs back together. Install center bolts and tighten. Remove C-clamps.

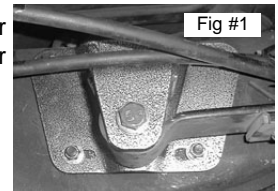
The spring center bolt must be in the hole on the top of the axle. Check before tightening u-bolts. When center bolt is in place, install u-bolts, bottom plate and nuts. Tighten u-bolts.

Remove the two striker pad brackets attached to the frame.

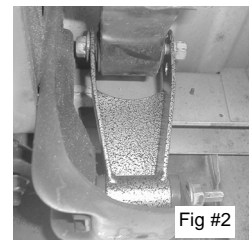
Loosen and remove the two shackle bolts, and remove the stock shackle.

Remove the bolt holding front of the leaf spring to the front spring hanger.

Remove the rivets holding spring hanger to the frame. This can be done with a air chisel, grinder or drill out rivets. Mount your new DJM Spring hanger in original holes on the frame with hardware provided. The gas tank may need to be moved to gain access to bolts on driver side. Raise the axle so the front of the springs can be located in new hanger. There are two holes to mount the spring to give some adjustment. The upper hole will give you more drop. Install the spring bolt and attach nuts. Do not tighten nuts. (Some may find it easier to attach the spring to the hanger before bolting the hanger to the frame.) See fig #1.



Apply some grease to the bushings and inside sleeves then attach new shackle on the frame mount and bolt in place with factory bolts (Fig #2). Shackle will install with bushings down and open side forward. The hole farthest away from bushing will lower truck more than the closer hole. Now raise the rear axle high enough to align the spring eye and shackle. Insert the remaining bolt and install nuts.



Install rear wheels and torque lug nuts. Remove jack stand and floor jack. Check the height of the rear. You can change the height by moving the spring to the other hole in shackle. When satisfied with the height, install new shocks. Tighten all bolts.

Take truck for test drive. Record complete height on installation helper. Double check all hardware.

Check out all the DJM products on the web www.DJMSuspension.com

Tech Line (310) 538-1583