



PART # HS3015-5

1999-2007 F350 Super Duty

INSTALLATION INSTRUCTIONS

Please take the time to read these **INSTALLATION INSTRUCTIONS** and check the **Hardware Parts List** to be sure you have all the listed parts.

These installation instructions are prepared for the professional installer with the proper equipment, tools and experience in suspension systems and safety. This vehicle and its components are extremely heavy and can be dangerous without the proper equipment and experience.

Please read the warranty information (blue page enclosed). Complete your Product Warranty Card and mail it to DJM Suspension.

Please take a few minutes to fill out your installation helper (back side of warranty). Accurate measurements **BEFORE BEGINNING INSTALLATION** will show any irregularities in your vehicle.

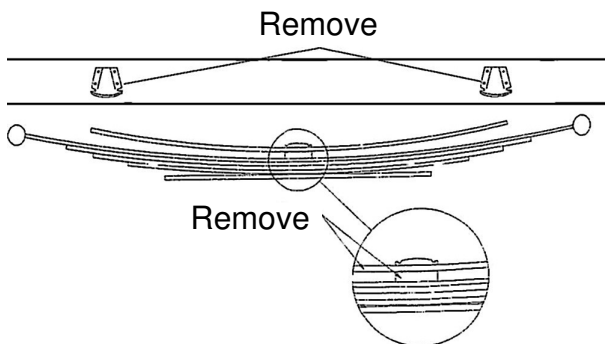
NEVER WORK UNDER TRUCK SUPPORTED BY A JACK ONLY !!!
USE QUALITY JACK STANDS WHICH HAVE A RATING ADEQUATE FOR YOUR TRUCKS WEIGHT!!!

THIS KIT REQUIRES THE REMOVAL OF UPPER OVERLOAD SPRINGS AND STRIKER PADS. THIS WILL REQUIRE ADDITIONAL LOAD CARRYING DEVICES TO RETAIN LOAD CAPACITY.

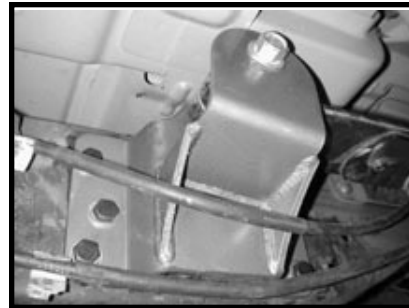
Hardware Parts List:

- 1- Right Spring hanger.
- 1- Left Spring hanger.
- 2- Shackles w/ bushings installed.(3015) (3016)
- 12- 7/16x14x 1-1/4 Bolts.
- 12- 7/16x14 Nylock Nuts.
- 12- 7/16 Flat Washes.
- 2- 4 Degree Pinion Shims. (ACC-4PSK)
- 2- 3/8" Spacers.
- 2- 3/8" Center Pins w/Nuts

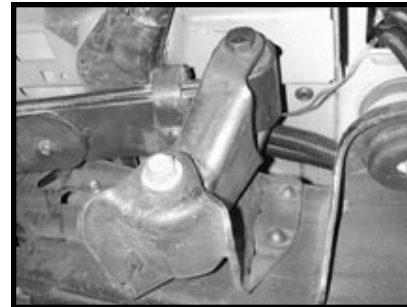
Caution : Leaf springs are under considerable tension. Good judgment should be used when removing spring bolts. The rear spring may move causing a pinch point between the spring and rear shackle. Installing spring hangers require the removal of the factory hanger (located on the front of the spring). They are riveted to the frame and the rivets must be removed. This can be difficult and time consuming without the proper tools and experience. DJM recommends professional installation.



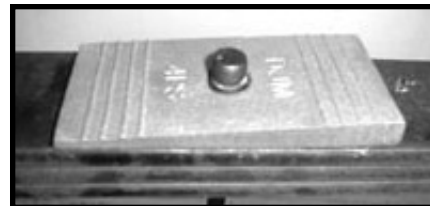
On F350 remove the upper overload springs and install the pinions shims using bolts and spacer supplied. The spacer will hold the bolt high enough to locate axle. Remove the striker pads attached to the frame.



The hangers have 3 holes to attach the leaf spring. This will give some adjustment to the drop. The top hole will give the most drop. It may be easier to bolt the spring to the hanger before bolting hanger to frame.



Apply grease to the shackle bushings. Install the shackle with the bushings down and the open side forward. Do not over tighten the spring bolts. The shackle has to move with the flexing of the spring. Check all bolts then test drive.



If you experience high speed vibration you will need to install a pinion shim. This will move the front of the rear end toward the ground and correct the vibration