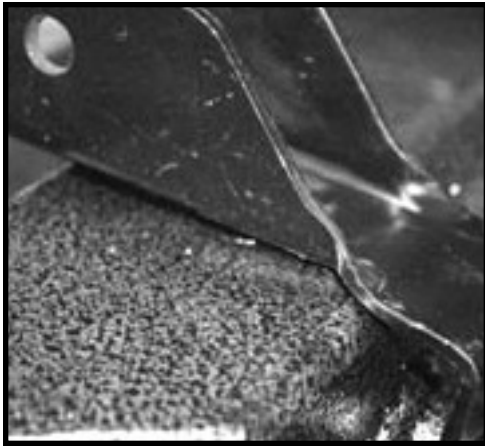


RANGER SWAY BAR INSTALLATION



When you get ready to install your sway bar on the dream beam you will find at first site the holes do not line up



Place the bracket in a vice and give it a couple of good hits. We want to create an angle that will help us with alignment



Now after bending the bracket the hole alignment is better but it does not fit flat with the surface of the beam



The bolt is plenty long enough to get started by hand



Now just crank down the bracket with your ratchet until it is flush



As you can see the bracket is now flush and you can finish the installation