

Rev. # 3-03

PART # HS2599-4 & HS2599-4X

1999-2006 CHEVY C1500 REAR HANGERS & SHACKLES

INSTALLATION INSTRUCTIONS

Please take the time to read these **INSTALLATION INSTRUCTIONS** and check the **Hardware Parts List** to be sure you have all the listed parts.

DJM parts should be installed by qualified mechanics. If you are not familiar with automotive repair have the parts installed by someone with experience.

Please read the warranty information (blue page enclosed). Complete your Product Warranty Card and mail it to DJM Suspension.

Please take a few minutes to fill out your installation helper (back side of warranty). Accurate measurements **BEFORE BEGINNING INSTALLATION** will show any irregularities in your vehicle.

NEVER WORK UNDER TRUCK SUPPORTED BY A JACK ONLY !!!
USE QUALITY JACK STANDS WHICH HAVE A RATING ADEQUATE FOR YOUR TRUCKS WEIGHT!!!

Compare hanger to original before beginning. If mounting is different than stock, call DJM for assistance.

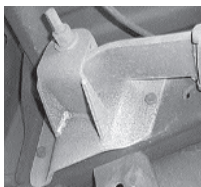
Hardware Parts List:

- | | |
|---|------------------------------|
| 2- Spring Eye Hangers. | 2- Bump Stops(10S). |
| 2- Shackles w/ bushings(1011). | 2- 1/2" x 20 x1" Bolts. |
| 8- 7/16" x 14 Nylock Nuts. | 2- 1/2" x 20 Jamb Nuts. |
| 8- 7/16" x 14 x 1-1/4" Bolts. | 1- 1/2" x 13 x 2-3/4" Bolts. |
| 8- 7/16" Flat Washers. | 1- 1/2 x 13 Nylock Nuts. |
| 2- 5/8" x 11 x 4-1/2" Leaf Spring Bolt. | 1- 3/8" x 16 x 1" Bolts. |
| 2- 5/8" Flat Wahers. | 1- 3/8" x 16 Nylock Nuts. |
| 2- 5/8" X11 Nylock Nuts. | |

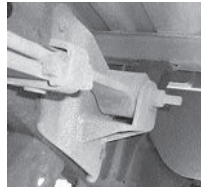
1-Carrier Bearing Bracket Kit(CB99). (used in HS2599-4X Only)

Remove rear shocks. Keep hardware. Position a floor jack under center of rear axle and raise it until the weight is taken off the leaf springs. Remove the bolt holding front of the leaf spring to the front spring hanger. Loosen and remove the two shackle bolts, and remove the stock shackle. Caution : Leaf springs are under considerable tension. Good judgment should be used when removing shackle bolts. The rear spring may move causing a pinch point between the spring and rear shackle.

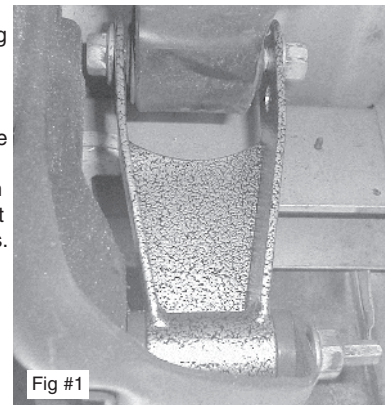
Remove the rivets holding spring hanger to the frame. This can be done with a air chisel or drill out rivets. With new bolts supplied, attach spring to hanger and install nuts. Do not tighten nuts. Mount your new DJM Spring hanger in original holes on the frame with hardware provided,



torque bolts to 55-60 ft/lb. Gas tank will need to be moved to gain access to bolts on driver side.

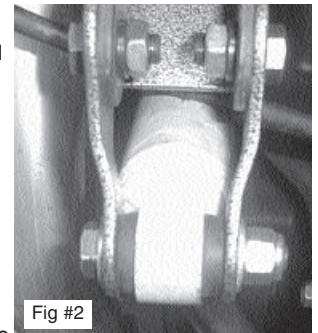


Apply some grease to the bushings and inside sleeves then attach new shackle on the frame mount and bolt in place with factory bolts (Fig #1). Shackle will install with bushings down and open side forward. The hole farthest away from bushing will lower truck more than the closer hole. Now raise the rear axle high enough to align the spring eye and shackle. Insert the remaining bolt and install nuts.



Remove stock bump stop and replace with new shorter stop.

Before installing rear shocks, install the shock extender to the right side axle mount. This will make the shock work at a much better angle. Slide bracket over the factory mount and install the two 1/2" x 1" bolts from the outside and tighten (Fig #2). Then line drill a 3/8" hole through the factory mount using the shock extender as a guide and install on 3/8" x 1" bolt and tighten. Now install the DJM # 1900 driver side rear shock and the DJM #2000 on the passenger side.



Install rear wheels and torque lug nuts. Remove jack stand and floor jack. Check the height of the rear. You can change the height by moving the spring to the other hole in shackle. **When satisfied with the height, torque all bolts to factory specs.**

Take truck for test drive. If drive line vibration occurs, with 2 piece drive shafts, install the Carrier bearing bracket #CB99 (included with HS2599-4X) to correct drive line angle. Check all bolts for correct torque.



Remove factory bracket from cross member.



Position new bracket and drill two holes to attach bracket.