



Rev. # 12-02

PART # FK1024-LTD

1973-1987 Chevy C10 REAR FLIP KIT

INSTALLATION INSTRUCTIONS

Please Note: Unless specifically stated, all DJM lowering components are intended exclusively for two wheel drive applications only!!!

Please take the time to read these INSTALLATION INSTRUCTIONS and check the Hardware Parts List to be sure you have all the listed parts.

These installation instructions are prepared for the professional installer with the proper equipment, tools and experience in suspension systems and safety. This vehicle and its components are extremely heavy and can be dangerous without the proper equipment and experience.

Please read the warranty information (blue page enclosed). Complete your Product Warranty Card and mail it to DJM Suspension.

Please take a few minutes to fill out your installation helper (back side of warranty). Accurate measurements BEFORE BEGINNING INSTALLATION will show any irregularities in your vehicle.

**NEVER WORK UNDER TRUCK SUPPORTED BY A JACK ONLY !!!
USE QUALITY JACK STANDS WHICH HAVE A RATING ADEQUATE FOR YOUR TRUCKS WEIGHT!!!**

New shocks are required.
Use DJM Part #2200 (2 required).

Hardware Parts List:

Axle Flip Kit

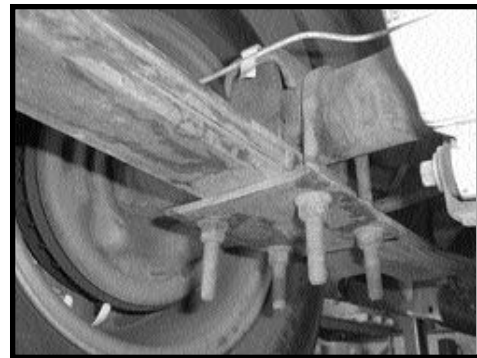
- 2- Axle Locators (1024)
- 2- Urethane Bump Stops (10S)

U-bolt Kit (FK1024-LTD Only)

- 4- 5/8" U-bolts (1025)
- 4- 5/8" x 18 Nuts
- 2- Spring Plates (1025)

Lower Shock Extenders

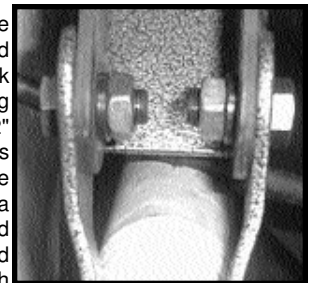
- 2- Shock Extenders (1124)
- 2- 1/2" x 20 x 3-1/4" Bolts
- 2- 1/2" Nuts
- 4- 1/2" Flat Washers
- 6- 1/2" x 20 x 1" Bolts
- 6- 1/2" x 20 Jam Nuts
- 12- 1/2" Lock Washers



Picture show may not depicted your axle.

Remove the factory bump stop bracket from the frame drill 3/8" hole to install bump stop to frame.

Now install new shock extenders. Slide over existing shock mount. The rounded end will be down, this is the end the shock will bolt to. Align original shock mounting holes with shock extenders. Install one 1/2" x 20 x 1" bolts in each hole, lock washers and jamb nuts (Nuts on inside!). Using the shock extender as a template, line drill a 1/2" hole through original shock mount and secure with a 1/2" x 1" bolt, washer and nut. Install new shock to rounded end with 1/2" x 20 x 3-1/4" bolts, lock washers and nuts. Tighten all bolts.



Install new rear shocks.

Test drive vehicle.

Measure the amount of drop and record on the installation helper.

RELOCATING (FLIPPING) REAR AXLE

Reverse the leaf spring center bolt so the nut is on the bottom.

Place the new axle locator bracket on top of the spring, with the off center hole toward front of vehicle. This will center the rear axle and pull the drive shaft back from the transmission slightly.

Lower rear axle so the new axle supports fits up inside the existing rear axle pad welded to axle. Mark and drill a hole in the factory spring plate for the spring center pin. This hole is offset just like the flip bracket. Install factory U-bolts and factory spring plate on the bottom of the springs. Tighten U-bolts. FK1024-LTD includes new u-bolts and plates.

Check out all the DJM products on the web www.DJMSuspension.com

Tech Line (310) 538-1583