



## Part # RK3209-5 f150 INSTALLTION INSTRUCTIONS



**NOTE: PLEASE, INSURE ALL HARDWARE IS INCLUDED BEFORE INSTALLATION!!**

### Hardware Parts List

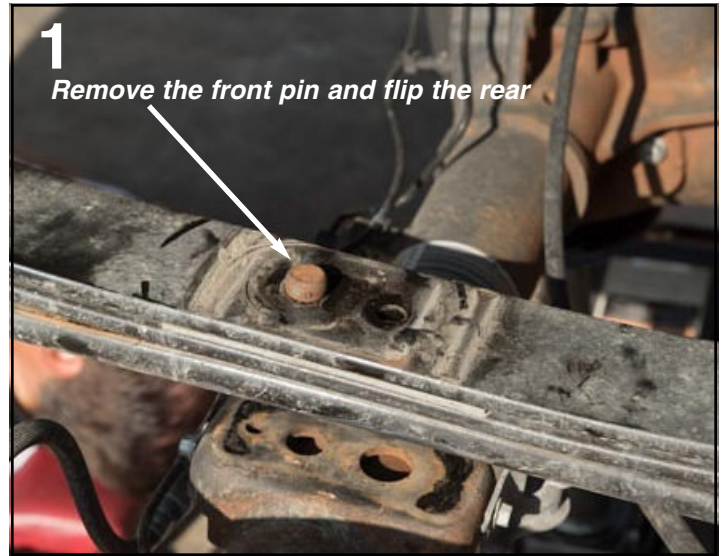
- 2x Lower Axle Brackets (3204)
- 2x Upper Axle Brackets (3204)
- 4x 5/8 U-bolts w/ nuts and washers (1025)
- 8x 5/8 Flat washers
- 8x 5/8 Nylock nuts
- 2x Lifting Shackles (3200)
- 2x Spring Plates (3209)
- 2x 5/8 X 3 1/2" tap bolts
- 2x 5/8 X 4" tap bolts
- 2x Bump Stops (10s)
- 4x Zip Ties
- 2x 2200 Shock Absorbers (Optional)

1) Before beginning, measure from the center of the wheel to the top of the fender. Record measurements on the installation sheet (Included). Note: Removal of the drivers side leaf springs and gas tank not necessary.

2) Remove the U-bolts, top bracket, and spring plates. Always have the rear end supported with a floor jack! Now, remove the passenger side leaf spring. Next, remove the forward center pin and flip the rear pin. (See Figure 1)

3) Now, prepare for the drivers side leaf spring. This can be done without removing the front leaf bolt. First, remove the front leaf nut, then remove the rear shackle bolt. Now, with a little maneuvering, you should be able to remove the rear shackle.

4) Next, remove the brake line bracket and rear parking brake cable. (See Figure 2) This is to give you enough slack to maneuver the axle to clear the break and get it on top of the leaf spring. (See Figure 3) Install the new shackle, use the bolt provided. (See figure 4)



5) Now, that the axle is on top of the spring install the passenger side leaf. Do not forget to switch the original shackle with the new DJM shackle.

6) Lift the axle enough to install the flip bracket. (Remember the front center bolts have been removed and the rear reversed) Align the axle perch with the flip bracket. Install the new U-bolts and spring plates. Do not tighten.

7) Rotate the axle until the front perch is 1/8 inch in front the flip bracket. The top plate should be at a slight angle, with the high end towards the tail gate. Snug up the U-bolts (keeping them even). Make sure to start the nuts by hand to insure they are not cross threaded!!

8) Install the top bracket, with the longest bolt in the rear and shorter bolt in the front. Do not over tighten!! Make sure not to bend the bracket, only use around 35 pounds pressure. Now, finish tighten the U-bolts.

9) Make sure the brake line bracket is reinstalled. Route the E-brake line to the outside of the leaf spring and reattach it. Install rear shocks DJM part# 2200

10) Chase the thread, use the 3/8 -18 tap. The new bump stop screws right in.(See Figure 6 & 7)

**Note: If you run into any difficulties, please contact us!!**  
**Give us a call at (310) 538-1583 or email us at**  
**tech@djmsuspension.com**

