

HS1130-4 and HS1123-4 HANGER SHACKLE 4" REAR DROP 1965-1979 FORD F100-150 INSTALLATION INSTRUCTIONS



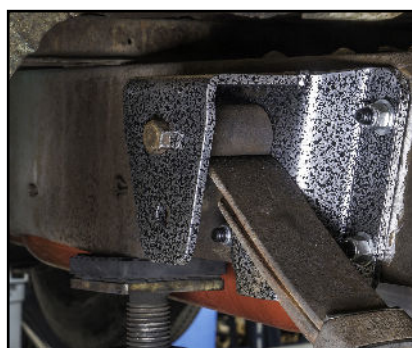
The original spring hanger is attached with rivets that must be removed



There are many ways to remove the rivets we used and small plasma cutter for fast work



When the rivets are removed clean up the frame. The new hanger will bolt directly to the existing holes



The new lowering hanger bolts fit directly with supplied hardware



This is the original shackle and the DJM shackles. It's easy to fit the new shackles when the leaf spring is removed



The new DJM shackle installed. Do not tighten the bolts until the first test drive. Just snug the red bushings.



www.djmsuspension.com
580 West 184th Street Gardena
Ca 90248