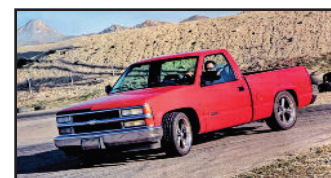
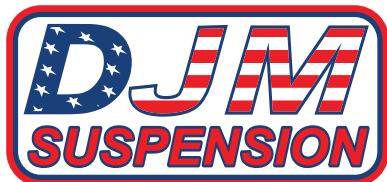


1988-1998 Chevy C1500 4" Control Arm

Part# CA2555L-4 and CA2555U

Installation Instructions



Install the upper ball joints and grease fitting, Lower ball joints are installed at the factory and only the grease fitting need to be installed



Lube the fittings make sure the predrilled grease holes, grease fitting and twin sleeve accept the grease and moves smoothly



The upper spring tower may need to be trimmed to make installation of the drivers spring easier. 1/4" Extra clearance is all that's needed



Install the control arms and coil, Caution needs to be taken when compressing coil springs make sure everyone is out of the way and safe.



After the coil spring is compressed and in position install the shock and you will be able to remove the jack



Make sure to point to tie rod sleeve so the bolt heads are away from the bump stops make sure there is no contact

For complete installation video click QR code



www.djmsuspension.com

580 West 184th street Gardena CA, 90248

tech@djmsuspension.com

orders@djmsuspension.com

310 538-1583