



PART # RK2007

2007- Tahoe

REAR HARDWARE KIT

INSTALLATION INSTRUCTIONS

DJM parts should be installed by qualified mechanics. If you are not familiar with automotive repair have the parts installed by someone with experience.

Please read the warranty information (blue page enclosed). Complete your Product Warranty Card and mail it to DJM Suspension.

Please take a few minutes to fill out your installation helper (back side of warranty). Accurate measurements **BEFORE BEGINNING INSTALLATION** will show any irregularities in your vehicle.

Used with rear coil springs #CS2007R-3 or CS2007R-4, sold separately.

Hardware Parts List:

- T railing Arm Brackets**
- 2- Trailing Arm Brackets.**
- 2- Sway Bar End Links.**
- 6- 1/2" x 13 x 1-1/4" Bolts.**
- 6- 1/2" x 13 Nylock Nuts.**
- 12- 1/2" Flat Washers.**
- 2- 9/16" x 12 x 4-1/2" Nylock Nuts.**
- 2- 9/16" x 12 Nylock Nuts**
- 2- 9/16" Flat Washers.**
- 2- 3/8" x 16 x 1" Bolts.**
- 2- 3/8" Flat Washers.**
- 2- 3/8" x 16 Nylock Nuts.**

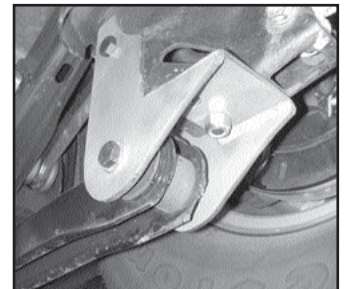
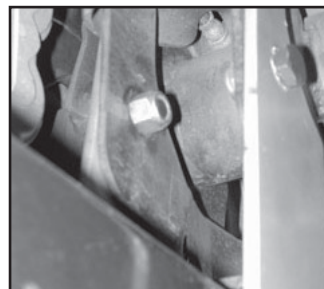
Sway Bar End Links

- 1- Drive Side Sway Bar End Link.**
- 1- Passenger Side Sway Bar End Link.**
- 2- 1/2" x 13 x 2-3/4" Bolts.**
- 2- 1/2" x 13 Nylock Nuts.**
- 4- 1/2" Flat Washers.**



With the vehicle supported securely, lower the axle far enough to remove coil springs. Both trailing arm brackets are the same

Unbolt trailing arms from under the axle. Bolt the new DJM Trailing arm bracket to the axle mount using the original holes. Attach with 1/2" x 1-1/4" bolts. Bolt trailing arm to the new bracket with 9/16" x 4-1/2" bolts. Tighten bolts for brackets then trailing arms. Do not over tighten trailing arm bolts.



www.djmsuspension.com
580 West 184th Street Gardena Ca 90248
contact us:

REAR HARDWARE KIT INSTALLATION INSTRUCTIONS

Remove factory orange bump stop and cut off first ring. Reinstall bump stop.

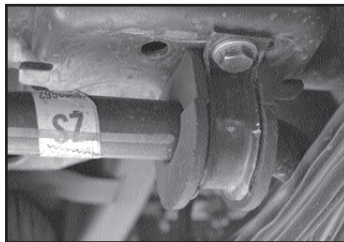
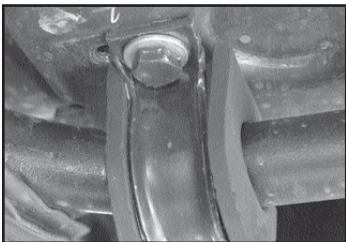


Next install new rear coil springs using factory isolators. Raise the axle until both coils are fully seated. Tension must be maintained on the coils until the installation is complete. You can support the axle with jack stands or install wheels and set vehicle on the ground.

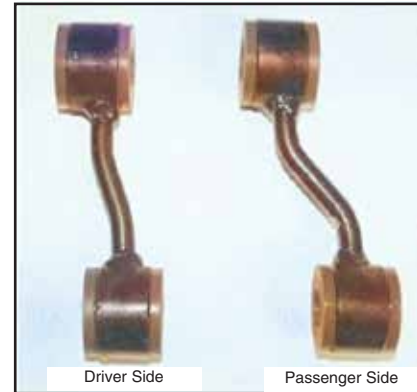
Relocating sway bar. The rear sway bar must be moved to the passenger side to clear the factory tracking bar bracket. The photo shows the sway bar in the correct position after lowering. There is about 3/4" to 1" space between the sway bar and the track bar bracket. Installing 3" rear coils without moving the sway bar over will result in ruff ride.



The d-bushing on the driver side must be moved over on the frame about 1" (Fig #4). Ubolt driver side bracket, slide the bracket to the passenger side. Mark and drill two 3/8" holes and bolt on with 3/8" x 1" bolts



Identify the left and right end link. The driver side is offset only a little and the passenger side has a greater offset (Fig #6).



Apply some grease to the bushings and bolt the driver side end link to the factory upper mount using factory hardware. The lower end is offset to the passenger side. Bolt the sway bar to the outside of the endlink using 1/2" x 2-3/4" bolts (Fig # 7).



Apply some grease to the bushings and bolt the passenger side end link to the factory upper mount using factory hardware. The lower end is offset to the passenger side. Bolt the sway bar to the outside of the endlink using 1/2" x 2-3/4" bolts (Fig # 8)

Check All bolts. Take your truck for a test drive. With the vehicle on ground measure height of the vehicle and record on installation helper. REMEMBER AFTER TEST DRIVING INSPECT INSTALLATION AND DOUBLE CHECK ALL THE HARDWARE IS TIGHT.

www.djmsuspension.com
580 West 184th Street Gardena Ca 90248
contact us: